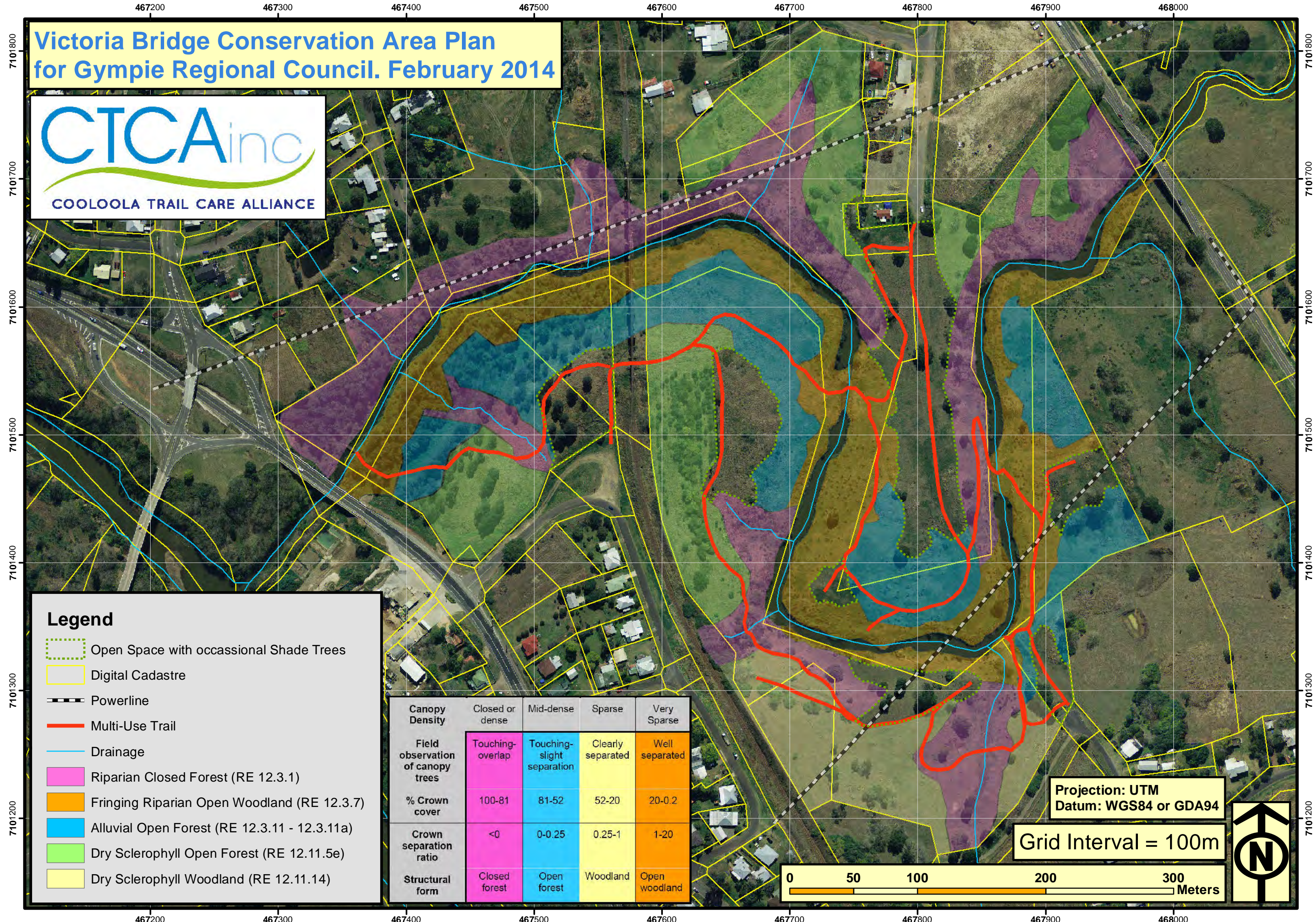


# Victoria Bridge Conservation Area Plan for Gympie Regional Council. February 2014



### Legend

- Open Space with occasional Shade Trees
- Digital Cadastre
- Powerline
- Multi-Use Trail
- Drainage
- Riparian Closed Forest (RE 12.3.1)
- Fringing Riparian Open Woodland (RE 12.3.7)
- Alluvial Open Forest (RE 12.3.11 - 12.3.11a)
- Dry Sclerophyll Open Forest (RE 12.11.5e)
- Dry Sclerophyll Woodland (RE 12.11.14)

Canopy Density	Closed or dense	Mid-dense	Sparse	Very Sparse
Field observation of canopy trees	Touching-overlap	Touching-slight separation	Clearly separated	Well separated
% Crown cover	100-81	81-52	52-20	20-0.2
Crown separation ratio	<0	0-0.25	0.25-1	1-20
Structural form	Closed forest	Open forest	Woodland	Open woodland

Projection: UTM  
Datum: WGS84 or GDA94  
Grid Interval = 100m

